



# ESS-MAXGEN

Monopolar / Bipolar Electrosurgical generator with Touchscreen



OPERATING THEATRE

PROGRAM  
Program



# ESS-MAXGEN

Monopolar/Bipolar Electrosurgical Generator with Touchscreen

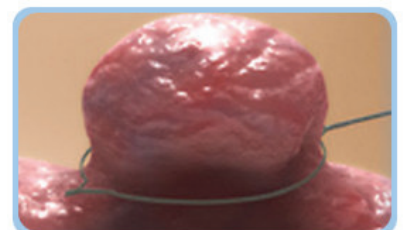
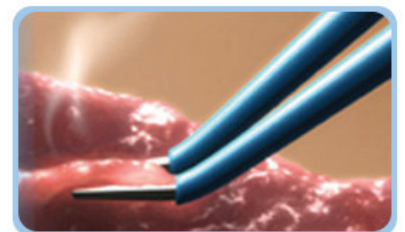


## ESS-MAXGEN - Electro Surgical Generator

Device with Instant Tissue response technology and Tissue impedance measurement systems. This model offers top of the line features like 100 program modes, multiple blend modes, endo cut facility, best monopolar cutting and coagulation performance with precision controlled bipolar output and host of safety features.

### Performance Features :

- 100 Programs memory :**  
 100 programs memory to save all desired settings for all different cases. Recall on program selection. Touch screen display.
- Accessories contact detection during plug in and operation :**  
 Accessories are detected during plug in and indicator for the footswitch turns red with words "FS" indicating that the same are ready for operation. During Press mode the indicator turns green showing which mode has been activated, reducing chances of wrong mode operation.
- Multiple modes for superior functionality :**  
 Multiple Modes - 2 Cut modes, 5 Blend modes, 3 EndoCut modes, 2 Spray modes, 2 Fulgurate modes, 1 Dessicate mode, 1 Bi-Cut mode, 2 Bi-coag mode and for all types of procedures and all types of desired settings for superior performance.



## Technical Specifications :

### • Monopolar Modes:


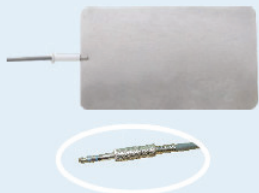




Mode	Max. Power (Watts)	Rated Load (Ohms)	Program	Operating Frequency
Pure Cut	400 W	500	100	480 khz
Precise Cut	300 W	500	100	480 khz
Blend 1	250 W	500	100	480 khz
Blend 2	225 W	500	100	480 khz
Blend 3	200 W	500	100	480 khz
Blend 4	175 W	500	100	480 khz
Blend 5	150 W	500	100	480 khz
Endocut 1	150 W	500	100	480 khz
Endocut 2	100 W	500	100	480 khz
Endocut 3	75 W	500	100	480 khz
Coarse Spray	120 W	500	100	480 khz
Fine spray	100 W	500	100	480 khz
Coarse Fulgurate	150 W	500	100	480 khz
Fine Fulgurate	150 W	500	100	480 khz
Desiccate	150 W	500	100	480 khz

### • Bipolar Modes:

Mode	Max. Power (Watts)	Rated Load (Ohms)	Program	Operating Frequency
BI - Cut	120 W	500	100	480 khz
Macro	120 W	500	100	480 khz
Micro	80 W	500	100	480 khz

Dimension ( W x H x D )	300 mm x 150 mm x 340 mm
Weight	5.5 Kg
Input Voltage	170 to 260 VAC 50 Hz

## Standard Accessories :

<p><b>Monopolar Double Pedal Footswitch / Bipolar Single Pedal Footswitch</b></p> 	<p><b>Autoclavable Patient Plate With Cable Cord</b></p> 	<p><b>Silicon Patient Plate ( Optional )</b></p> 
<p><b>Chuk Handle With Electrode Autoclavable</b></p> 	<p><b>Autoclavable Bipolar Forcep With Cable</b></p> 	<p><b>Disposable Hand Switch Pencil Imported</b></p> 



**ESS-MAXGEN**

**CUT**

Pure Cut	- 400 W
Precise Cut	- 300 W
Blend 1	- 250 W
Blend 2	- 225 W
Blend 3	- 200 W
Blend 4	- 175 W
Blend 5	- 150 W
Endo Cut 1	- 150 W
Endo Cut 2	- 100 W
Endo Cut 3	- 75 W

**COAG**

Coarse Spray	- 120 W
Fine Spray	- 100 W
Coarse Fulgurate	- 150 W
Fine Fulgurate	- 150 W
Dessicate	- 150 W

**100 Programs  
Memory**

**BIPOLAR**

Micro	- 80 W
Macro	- 120 W
Bi-Cut	- 120 W



**Monopolar  
Hand Switches  
Output**

**Active  
Monopolar  
Output**

**Bipolar Output**

**Patient Plate  
Input**



ESSE3 srl, Via Garibaldi 30  
14022 Castelnuovo D.B. (AT)  
Tel +39 011 99 27 706  
Fax +39 011 99 27 506  
e-mail esse3@chierinet.it  
web: www.esse3-medical.com

